

A Day in the Life of a CPS Student Learning at School

Given the health and safety challenges associated with reopening school during a global pandemic, students, staff, and families must be prepared for school to look and feel different next year. Although these changes may feel difficult at first, we believe they are both prudent and necessary to support the safety of our students and staff. While these changes will impact the majority of our students, we also recognize the diverse medical needs of our students, and schools will work with our Office of Diverse Learner Supports and Services department to ensure all students are properly supported.

When students attend school for in-person instruction, this is what they can expect their day to look and feel like:



1

Getting ready for school

Students will complete their required sick screen protocol at home. Students will bring their clean **cloth face covering with them**.



2

Traveling on the school bus

Students wear **cloth face coverings** while on the school bus. School bus aides will wear appropriate PPE and offer students hand sanitizer prior to boarding the bus. Students will sit by themselves or only with their sibling and be spaced to ensure proper social distancing.



3

Arrival at school

Drop-off times may be staggered, and students will enter the school building through assigned entrances alongside their pods in order to ensure proper social distancing. Upon entering the school building, students will wash their hands or use hand sanitizer.



4

Entering the classroom

Students will go straight to their classrooms. Students sit in **assigned spaces, eat meals in their room, and stay with their pod for the full school day**.



5

Following classroom procedures

Students and teachers will wear masks at all times, and student-teacher close contact will be limited. Only a limited set of supplies may be shared, and hand sanitizer will be used as needed.

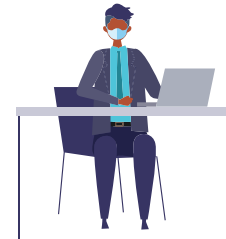


6

Taking restroom/lunch breaks

Pods will have designated bathrooms which will be cleaned frequently throughout the day. Students will need to **wash their hands** thoroughly and use **hand sanitizer** anytime they return to their classroom space.

Students will **eat lunch in their classrooms**, or if space allows, eat lunch in the cafeteria on a staggered schedule. Lunchrooms will need to be **thoroughly cleaned and disinfected** between use.



7

Receiving student services

Related service providers, English learner teachers, diverse learner teachers, and social emotional learning specialists, among others, **will continue to provide student services**.

These staff members will **rotate across assigned pods** to provide services. If they need to see students in a pod not assigned to them, those services will be **provided remotely**, or with **social distancing**. Staff will have appropriate PPE depending on their job duties.



8

Accessing content

Students **remain in their pod** throughout the day, but additional **teachers may rotate across a few pods** to provide instruction across multiple subjects and breaks for classroom teachers.



9

Exiting the building

Students **move through hallways within their pods** and are socially distanced from all other pods.

Students leave the building through the **door assigned to their pod**.



10

Attending out-of-school time

Students can attend out-of-school time (OST) programming. Schools must either maintain classroom pods for OST programs, or form additional, fixed pods specifically for OST programs. Students participating in OST programs must maintain social distance to the extent feasible within their pods, and must either maintain six feet of distance from other OST pods at all times or remain in separate spaces from other pods. OST providers are encouraged to create **virtual adaptations** of programming wherever possible in order to minimize the need for additional pods.